

NOTES: UNLESS OTHERWISE SPECIFIED

1. **-OAI-** IS THE THEORETICAL OPTIC AXIS OF THE FIRST OPTIC SURFACE.

2. ASPHERIC SURFACES ARE DEFINED BY:

$$z(r) = \frac{r^2/R_c}{1 + \sqrt{1 - (1 + K)(r/R_c)^2}} + \sum_i A_{2i}r^{2i}$$

WHERE: Y= RADIAL DISTANCE FROM VERTEX IN mm

3. SURFACE DEFINITIONS:

	SURFACE 1	SURFACE 2
TYPE	ASPHERE	PLANO
SHAPE	CX	PL
CA	∅3.30	∅2.50
R <sub>C</sub>	1.764641	PLANO
K	-1.108645	0.000000
A <sub>2</sub>	0.000000E0	0.000000E0
A <sub>4</sub>	1.356816E-2	0.000000E0
A <sub>6</sub>	4.985807E-4	0.000000E0
A <sub>8</sub>	-8.468054E-6	0.000000E0
A <sub>10</sub>	-1.148465E-6	0.000000E0
A <sub>12</sub>	-2.871170E-6	0.000000E0
A <sub>14</sub>	2.066323E-7	0.000000E0
A <sub>16</sub>	0.000000E0	0.000000E0

4. NOMINAL DESIGN PARAMETERS.

DESIGN WAVELENGTH	405 nm
W.D.	1.554 mm
N.A.	0.66
E.F.L.	2.54mm

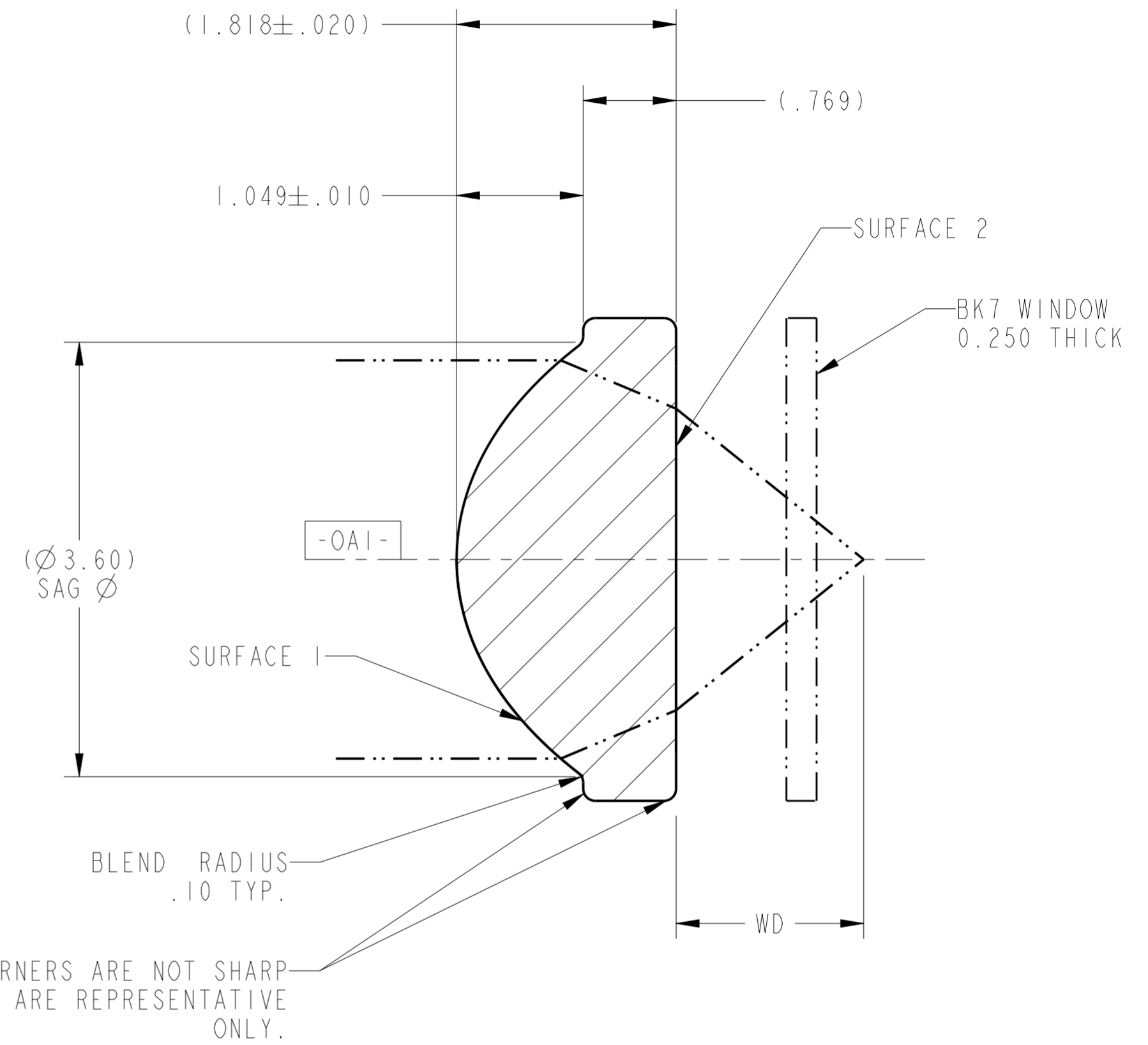
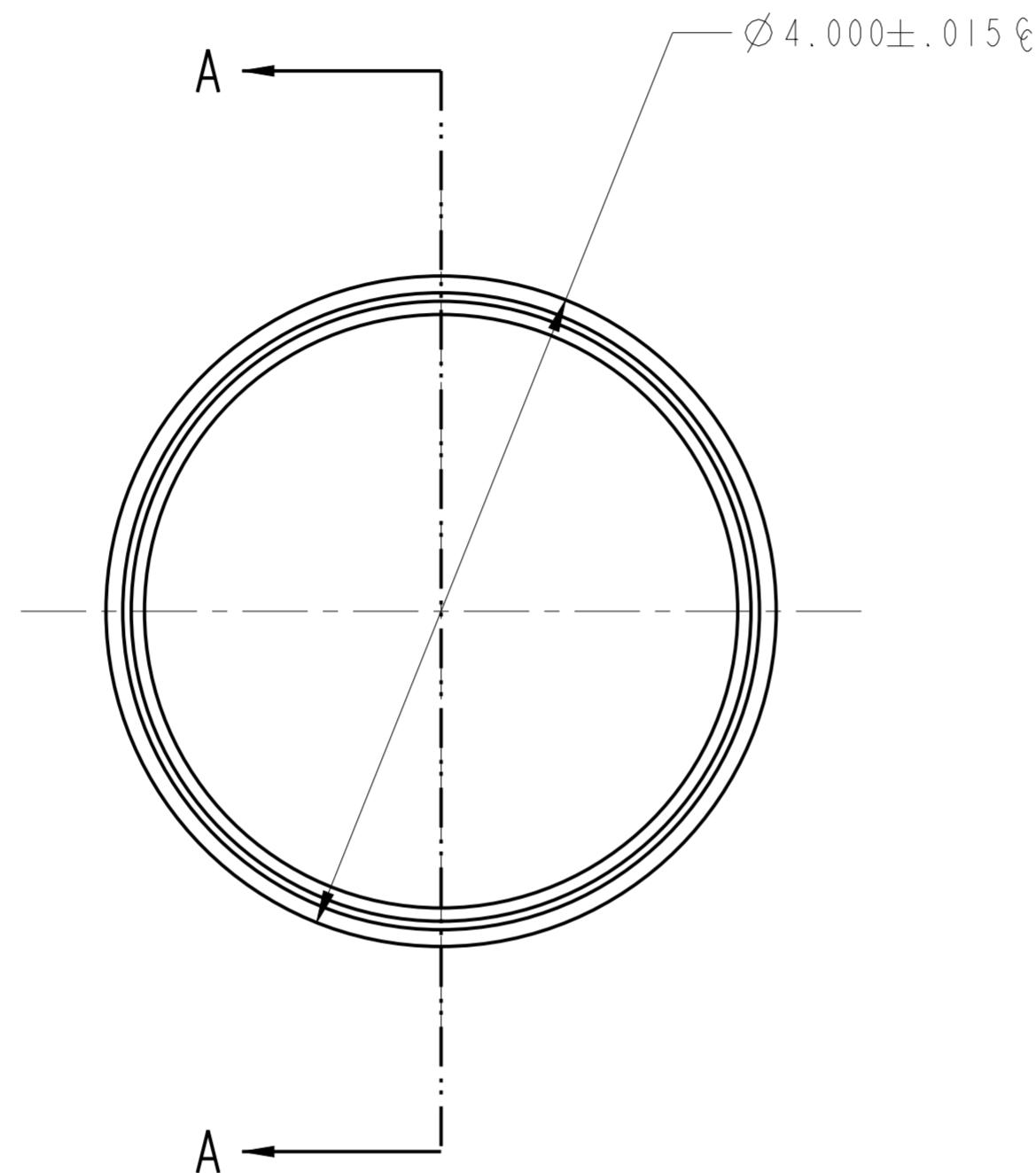
5. FEATURES IDENTIFIED AS Ⓢ ARE CRITICAL CHARACTERISTICS. CRITICAL CHARACTERISTICS ARE GUARANTEED IN PRODUCTION.

6. THIS ELEMENT MUST MEET THE SCRATCH/DIG REQUIREMENTS ACROSS THE FULL CLEAR APERTURES INDICATED, BOTH SIDES, PER LIGHTPATH PWI INS-8.2-05P6.Ⓢ -00: S/D: 40/20

7. THIS ELEMENT IS USED AS A COLLIMATING LENS.  
WAVEFRONT ERROR: @ 100% APERTURE < 0.300 WAVES RMS @ 632.8nm;  
@ 50% APERTURE < 0.250 WAVES P-V  
PER LIGHTPATH PWI INS-8.2-13.Ⓢ

	RADIUS ERROR	IRREGULARITY
S1	±0.002 mm	< 316.5 nm PV < 105.5 nm RMS
S2	N/A	

REVISION HISTORY				
REV	DCO	DESCRIPTION	DATE	INITIALS
A	2201	INITIAL RELEASE	08/20/09	ASYMMONS
B	4390	UPDATED FORMAT	12/29/15	PL
C	6443	ADDED IRREGULARITY SPECS	02/10/21	MPW



SECTION A - A

UNLESS OTHERWISE SPECIFIED  
DIMENSIONS ARE IN MM.  
DECIMAL TOLERANCES ARE:  
.X ± 0.25  
.XX ± 0.10  
.XXX ± 0.025  
.XXXX ± 0.013  
ANGLES: ± 0.5°

DRAWN  
ASYMMONS\ORL

MATERIAL  
L-LAL12(m)

SOFTWARE  
Pro/ENGINEER

**LightPath**  
TECHNOLOGIES  
2603 CHALLENGER TECH CT., SUITE 100  
ORLANDO, FL 32826

PROPRIETARY INFORMATION  
THIS DOCUMENT CONTAINS PROPRIETARY INFORMATION OF LIGHTPATH TECHNOLOGIES AND IS NOT TO BE DISCLOSED OR REPRODUCED IN WHOLE OR PART, OR USED FOR MANUFACTURING FOR ANYONE OTHER THAN LIGHTPATH TECHNOLOGIES WITHOUT ITS WRITTEN CONSENT. NO RIGHT IS GRANTED TO DISCLOSE OR USE ANY INFORMATION CONTAINED IN SAID DOCUMENT.

TITLE  
LENS CODE 356300

SIZE A2	DWG NO 0356300	REV C
SCALE: 25.00	THIRD ANGLE PROJECTION	SHEET 1 OF 1



DWG NO  
0356300